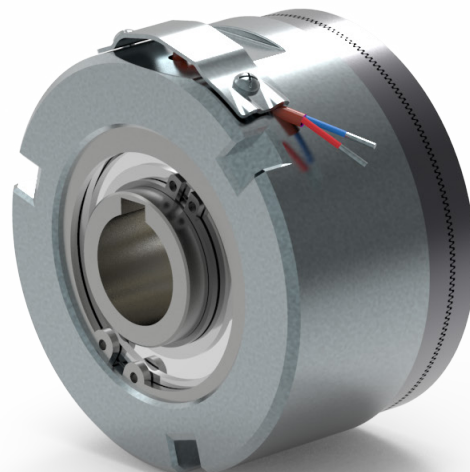
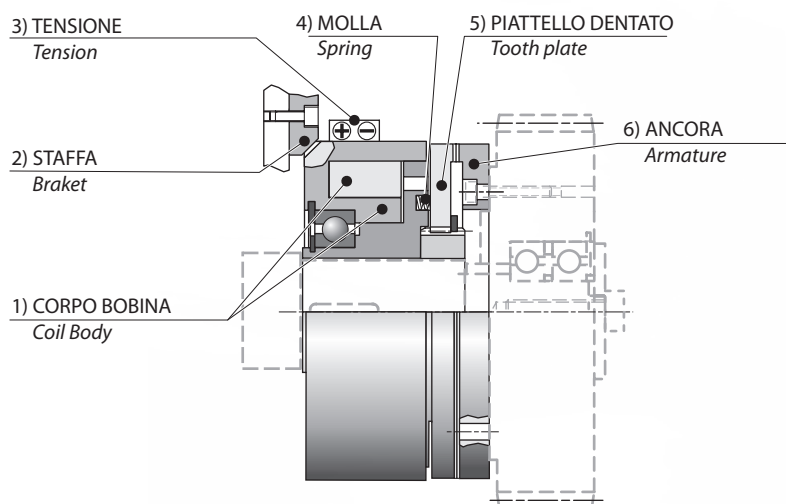
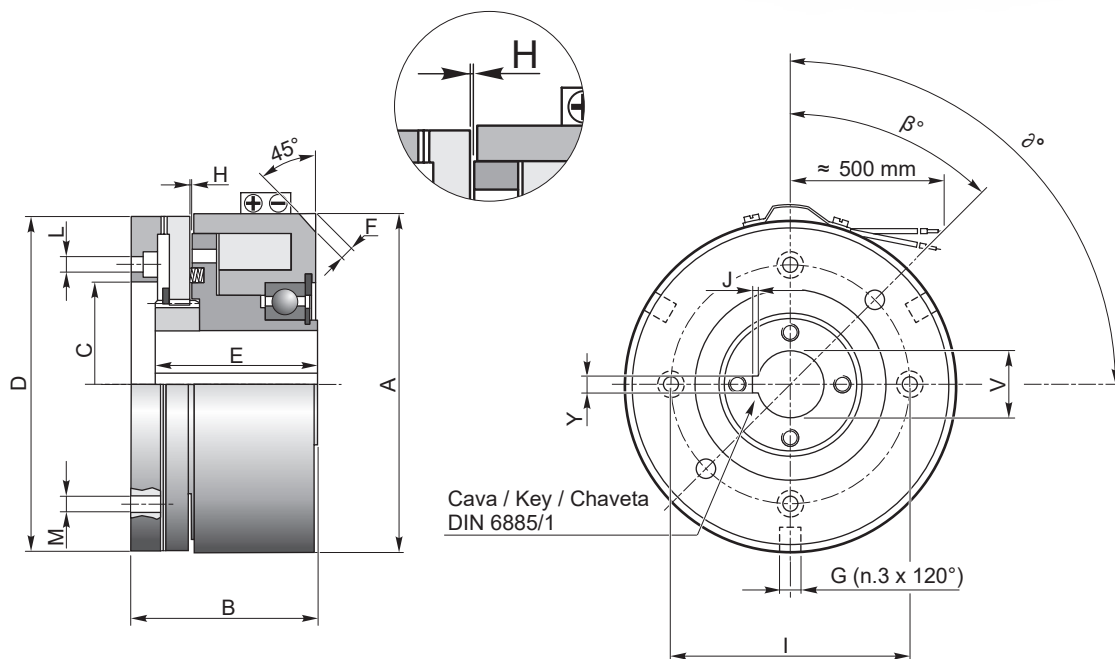


### Esempio di applicazione / Example of application



### Dimensioni / Dimension



### Caratteristiche / Characteristics

| TAGLIA<br>SIZE | Coppia nom. Statica<br>Nom. Static Torque | Tensione Nominale<br>Nominal Voltage | Potenza assorbita<br>Input Power | nmax           |                | Z   | Kg  |
|----------------|---|--------------------------------------|----------------------------------|----------------|----------------|-----|-----|
|                | CU 1)                                     | V (C.C - D.C)                        | W                                | a secco<br>dry | in olio<br>oil |     |     |
|                |   |                                      |                                  | rpm            | rpm            |     |     |
| GDFN70         | 10  | 24                                   | 36                               | 2000           | 3000           | 253 | 1   |
| GDFN95         | 50  | 24                                   | 53                               | 2000           | 3000           | 205 | 1.6 |
| GDFN114        | 100                                       | 24                                   | 53                               | 2000           | 3000           | 360 | 3   |
| GDFN126        | 200                                       | 24                                   | 84                               | 2000           | 3000           | 333 | 3   |
| GDFN155        | 300                                       | 24                                   | 129                              | 2000           | 3000           | 360 | 4.5 |

1) Selezione del valore di coppia vedere pag. / Selection the torque value see page

p.4

## Innesto a denti a mancanza di corrente

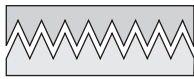
Electrically released toothed clutch

Codice d'ordine / Order code

| TIPO E TAGLIA<br>TYPE AND SIZE | DENTATURA<br>TOOTH PROFILES | CONNESSIONE<br>CONNECTION | Ø ALBERO<br>Ø SHAFT |
|--------------------------------|-----------------------------|---------------------------|---------------------|
|                                | <b>A</b>                    | <b>B</b>                  | <b>C</b>            |
| <b>GDFN95</b>                  | <b>2</b>                    | <b>2</b>                  | <b>1</b>            |
| GDFN70<br>...<br>GDFN155       | 2                           | 1<br>2                    | 1<br>2<br>3         |

### Dentatura / Tooth profiles

CODICE CODE **2**



**A**

Forma triangolare  
Triangular form

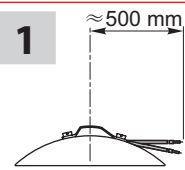
- A richiesta dentatura in fase

On request. tooth profiles for fixed point engagement

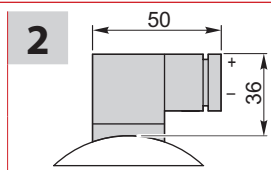


### Connessione / Connection

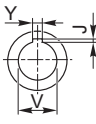
CODICE CODE **1**



**2**



### Albero / Shaft

|   |                   | GDFN |     |     |     |     |     |     |     |     |     |     |     |     |     |     |
|---|-------------------|------|-----|-----|-----|-----|-----|-----|-----|-----|-----|-----|-----|-----|-----|-----|
| <b>C</b>  | TAGLIA SIZE       | 70   |     |     | 95  |     |     | 114 |     |     | 126 |     |     | 155 |     |     |
|   | CODICE CODE       | 1    | 2   | 3   | 1   | 2   | 3   | 1   | 2   | 3   | 1   | 2   | 3   | 1   | 2   | 3   |
|  | øV H7             | 10   | 12  | 15  | 15  | 20  | 25  | 20  | 25  | 35  | 25  | 30  | 35  | 25  | 30  | 40  |
|   | Y P9              | 3    | 4   | 5   | 5   | 6   | 8   | 6   | 8   | 10  | 8   | 8   | 10  | 8   | 8   | 12  |
|   | J                 | 1.4  | 1.8 | 2.3 | 2.3 | 2.8 | 3.3 | 2.8 | 3.3 | 3.3 | 3.3 | 3.3 | 3.3 | 3.3 | 3.3 | 3.3 |
|   | n° Cave<br>n° Key | 1    | 1   | 1   | 1   | 1   | 1   | 1   | 1   | 1   | 1   | 1   | 1   | 1   | 1   | 1   |

### Dimensioni/ Dimension

| TAGLIA SIZE    | A   | B    | C (H7) | D   | E    | F   | G  | H   | I   | L       | M       | α° | β° |
|----------------|-----|------|--------|-----|------|-----|----|-----|-----|---------|---------|----|----|
| <b>GDNF70</b>  | 70  | 40.8 | 40     | 70  | 36   | 2.5 | 5  | 0.8 | 50  | 4 x 4.5 | -       | 90 | -  |
| <b>GDNF95</b>  | 95  | 60   | 52     | 92  | 52   | 5   | 8  | 1.2 | 64  | 4 x 5.5 | 2 x 4.5 | 90 | 45 |
| <b>GDFN114</b> | 118 | 65   | 75     | 114 | 57   | 5   | 8  | 1.2 | 90  | 4 x 6.5 | 2 x 5.5 | 90 | 45 |
| <b>GDFN126</b> | 134 | 78   | 75     | 126 | 65   | 5   | 8  | 1.5 | 90  | 4 x 6.5 | 2 x 5.5 | 90 | 45 |
| <b>GDFN155</b> | 155 | 77.5 | 85     | 140 | 68.5 | 5   | 10 | 1.5 | 100 | 4 x 6.5 | 2 x 7.5 | 90 | 45 |