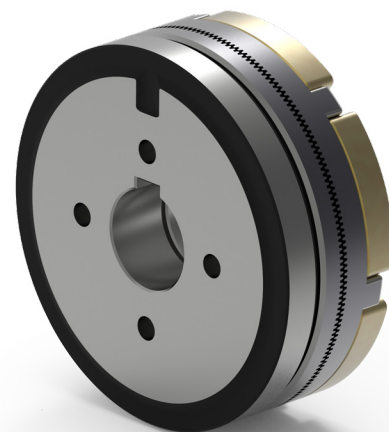
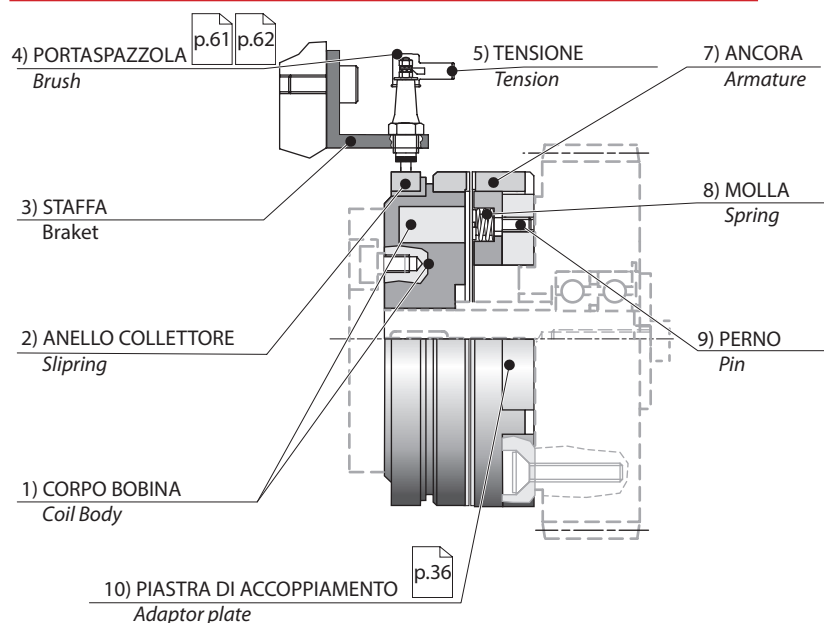
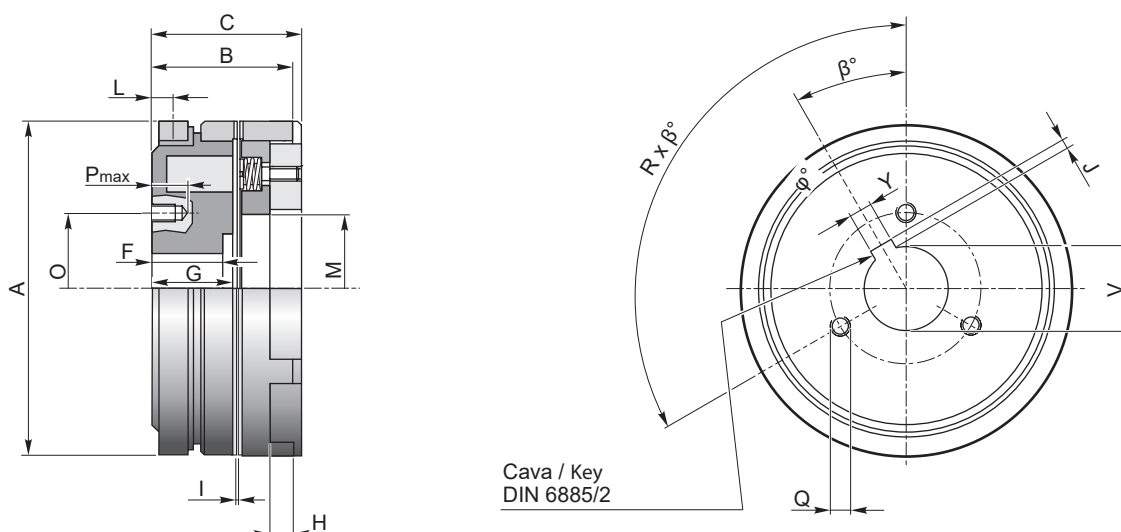


### Esempio di applicazione / Example of application



### Dimensioni / Dimension



### Caratteristiche / Characteristics

TAGLIA SIZE	Coppia nom. Statica Nom. Static Torque CU 1)	Tensione Nominale Nominal Voltage V (C.C - D.C)	Potenza assorbita Input Power W	n <sub>max</sub>		Tempo inserzione Engagement time ms	Tempo disinserzione Desengagement time ms	Z		Kg
				a secco dry	in olio oil			rpm	rpm	
				Nm	W					
GDR82FB	100	24	24	5000	2500	25	60	130	253	0.85
GDR95FB	200	24	28	4000	2000	25	70	156	280	1.15
GDR114FB	350	24	48	3500	2000	30	90	180	280	1.9
GDR134FB	600	24	57	3000	1500	45	130	144	310	3
GDR140FB	600	24	58	3000	1500	45	130	144	310	3.2
GDR166FB	1200	24	81	2500	1000	70	180	168	380	5.8
GDR195FB	2200	24	83	2000	1000	70	300	205	410	9.2
GDR210FB	3000	24	96	1500	1000	80	400	212	410	11.2
GDR240FB	4000	24	100	1500	1000	85	500	180	470	18
GDR258FB	6000	24	127	1500	1000	95	600	180	470	19

1) Selezione del valore di coppia vedere pag. / Selection the torque value see page p.4

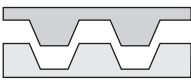
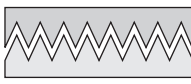
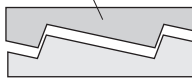

## Innesto elettromagnetico a denti con anello collettore

Electromagnetic tooth clutch with slipping

Codice d'ordine / Order code

TIPO E TAGLIA TYPE AND SIZE	DENTATURA TOOTH PROFILES	CONNESSIONE CONNECTION	Ø ALBERO Ø SHAFT
	<b>A</b>	<b>B</b>	<b>C</b>
<b>GDR95FB</b>	<b>2</b>	<b>3</b>	<b>1</b>
GDR82FB	1	-	1
...	2	3	2
...	3		3
GDR295FB	4		

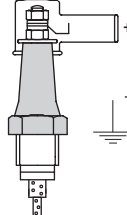
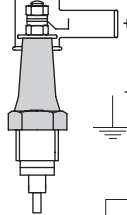
Dentatura / Tooth profiles

CODICE CODE	1	2	3	4
<b>A</b>	 Forma trapezoidale Trapezoidal form	 Forma triangolare Triangular form	 Ancora/Armature Dente sega SX Saw tooth anticlockwise	 Ancora/Armature Dente sega DX Saw tooth clockwise

- A richiesta dentatura in fase / On request, tooth profiles for fixed point engagement

p.11 p.13

Connessione / Connection

CODICE CODE	3	4
<b>B</b>		

- Ordinabile separatamente a richiesta / Can be ordered separately on request

p.78 p.79

Albero / Shaft

		GDR..FB																																	
<b>C</b>	TAGLIA SIZE	82			95			114			134			140			166			195			210			240			258			295			
	CODICE CODE	1	2	3	1	2	3	1	2	3	1	2	3	1	2	3	1	2	3	1	2	3	1	2	3	1	2	3	1	2	3	1	2	3	
	øV H7	12	15	35	20	25	45	30	32	50	35	38	60	40	45	70	38	40	75	50	55	85	60	65	95	65	70	105	70	80	120	70	80	120	
	Y P9	4	5	10	6	8	14	8	10	14	10	10	18	12	14	20	10	12	20	14	16	22	18	18	25	18	20	28	20	22	32	20	22	32	
	J	1.1	1.3	2.1	1.7	1.7	2.6	1.7	2.1	2.6	2.1	2.1	3.1	2.1	2.6	4.1	2.1	2.1	4.1	2.6	2.6	4.1	3.1	3.1	4.1	3.1	4.1	5.1	4.1	4.1	5.2	4.1	4.1	5.2	
	n° Cave n° Key	1	1	1	1	1	1	1	1	1	1	1	2	2	2	2	2	2	2	2	2	4	4	4	4	4	4	4	4	4	4	4	4	4	4

Dimensioni/ Dimension

TAGLIA SIZE	A	B	C	F	G	H	I	L	M	O	P	Q	β°	R x φ°
GDR82FB	82	37	40	23	23	6	0.3	5.5	35	41	15	M4	0°	3 x 120°
GDR95FB	95	38	41	20	23	6	0.4	5.5	45	50	13	M6	22°30'	4 x 90°
GDR114FB	114	43	46	23	26	7	0.4	6	53	60	15	M6	22°30'	4 x 90°
GDR134FB	134	50	53	26	29	8	0.4	7	63	72	15	M8	22°30'	4 x 90°
GDR140FB	140	51	54	26	30	8	0.4	7	70	80	15	M6	22°30'	4 x 90°
GDR166FB	166	60	63.5	30	35	9.5	0.4	7	80	92	15	M10	18°	5 x 72°
GDR195FB	195	68	71	33.5	38.5	12	0.4	7	90	110	15	M10	18°	5 x 72°
GDR210FB	210	73	75	35	38	14	0.4	8.5	105	120	20	M12	18°	5 x 72°
GDR240FB	240	81	83.5	37	42	14.5	0.4	8.5	115	140	18	M12	18°	5 x 72°
GDR258FB	258	84	86.5	42	46	16.5	0.4	8.5	133	150	18	M12	18°	5 x 72°